

## Scheduling a Geodetic VLBI Experiment using VieSched++

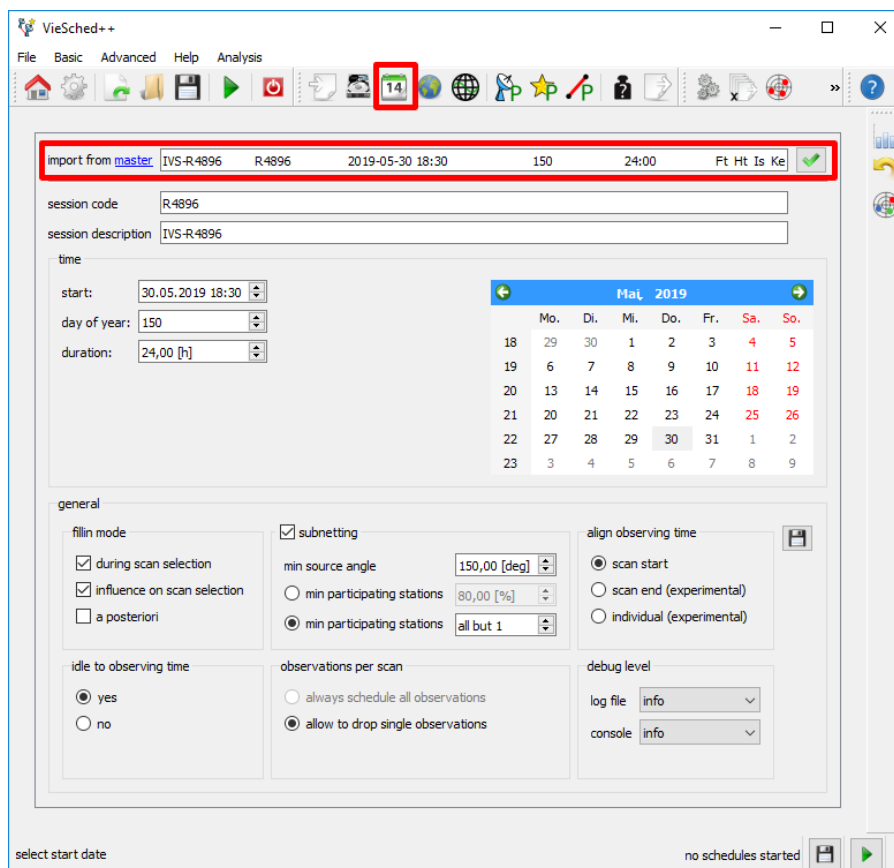
### 1 Description

This exercise will give a short introduction to the possibilities of creating a geodetic VLBI schedule using the VieSched++.

Our goal is to schedule today's session **R4896**. Things to keep in mind:

- it is a geodetic session
- the station network consists of 8 stations - global network
- the stations are very different - VGOS and legacy antennas

### 2 Read session details from IVS Master Schedule 2019

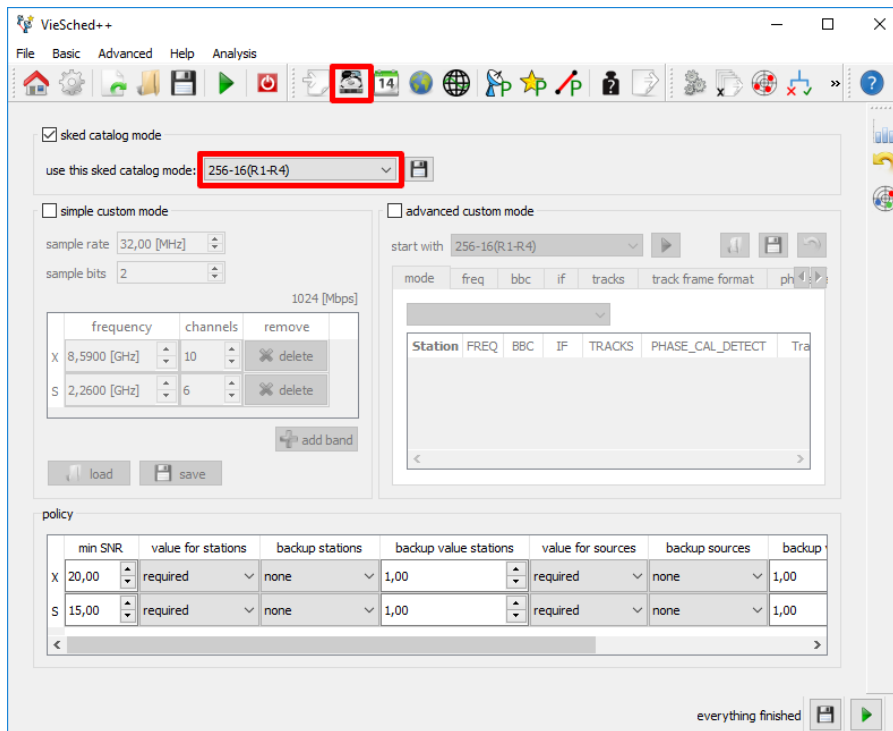


You can automatically import the session from the IVS Master Schedule

- browse to the general tab
- open IVS Master Schedule 2019
- copy line from R4896 to the import
- hit enter or click button to parse this line

→ start time, session codes and antenna network should be imported

### 3 Observing mode

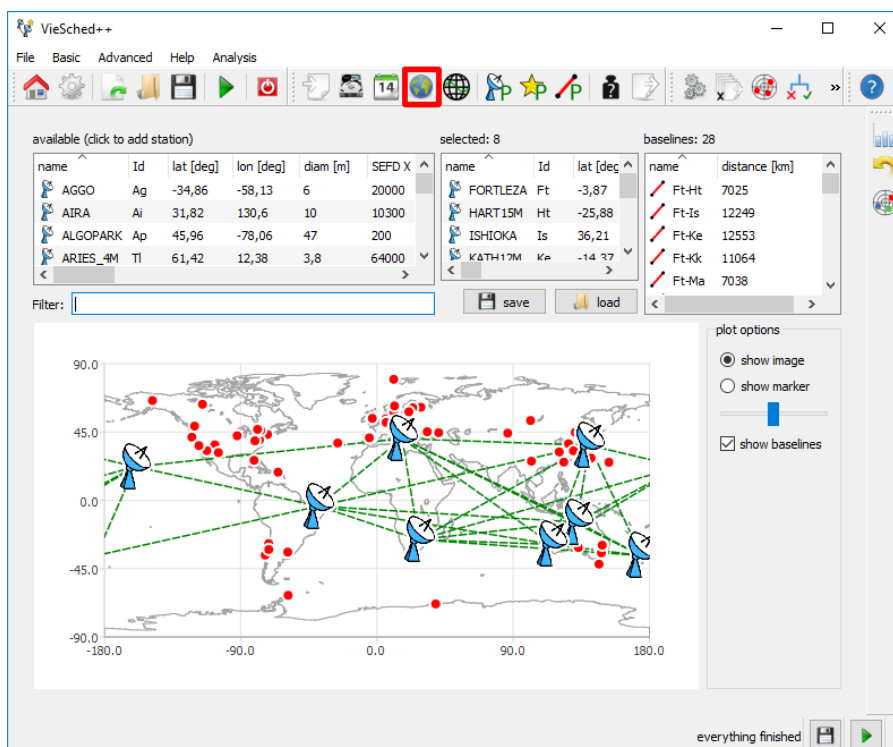


Make sure that the right observing mode is selected for this session.

### 4 Antenna network

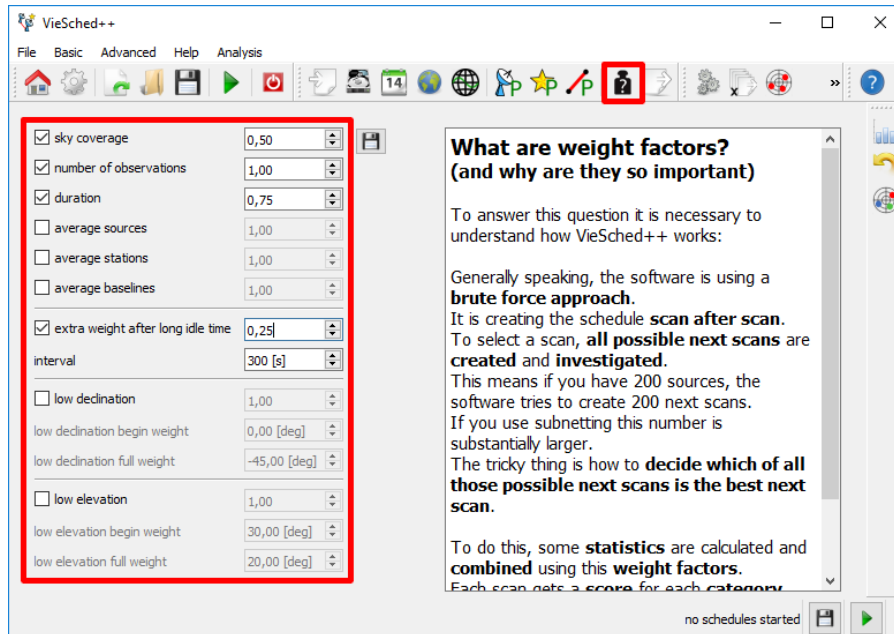
Have a look at the antenna network.

- you can add or remove stations by clicking on the “available” or “selected” list



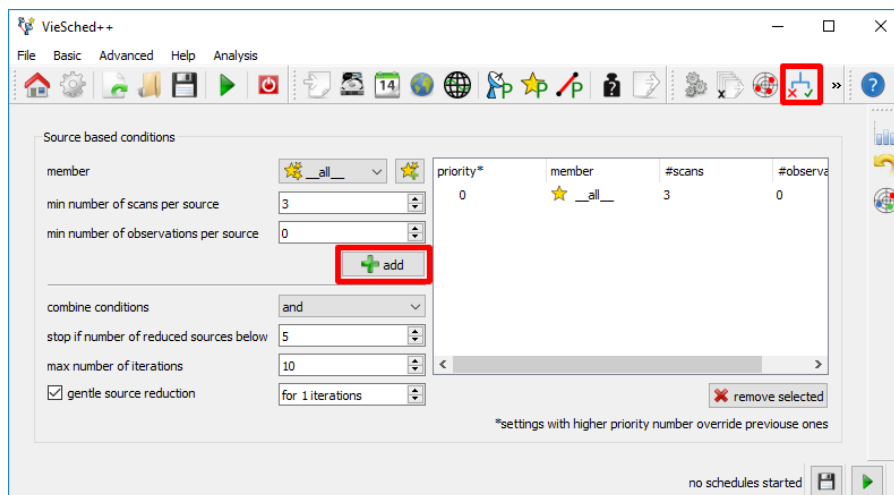
## 5 Weight factors

Weight factors can be used to optimize your schedule. It is often tricky to find good weight factors - you have to try them out. (The multi-scheduling feature is a handy way to do this)



## 6 Conditions

To automate the source selection add the condition that at least three scans should be observed per source.

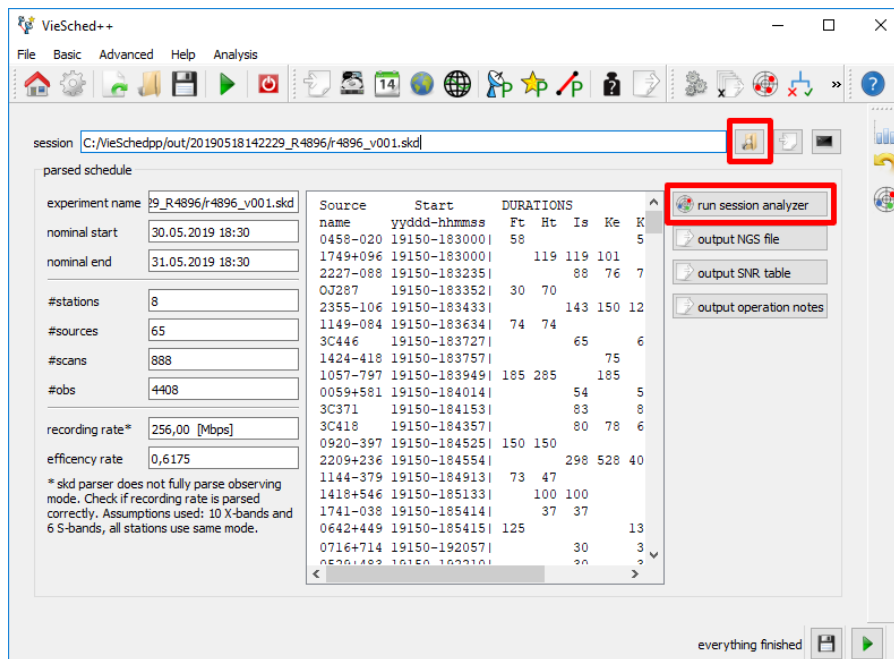


## 7 Run

Press run and have a look at the output files

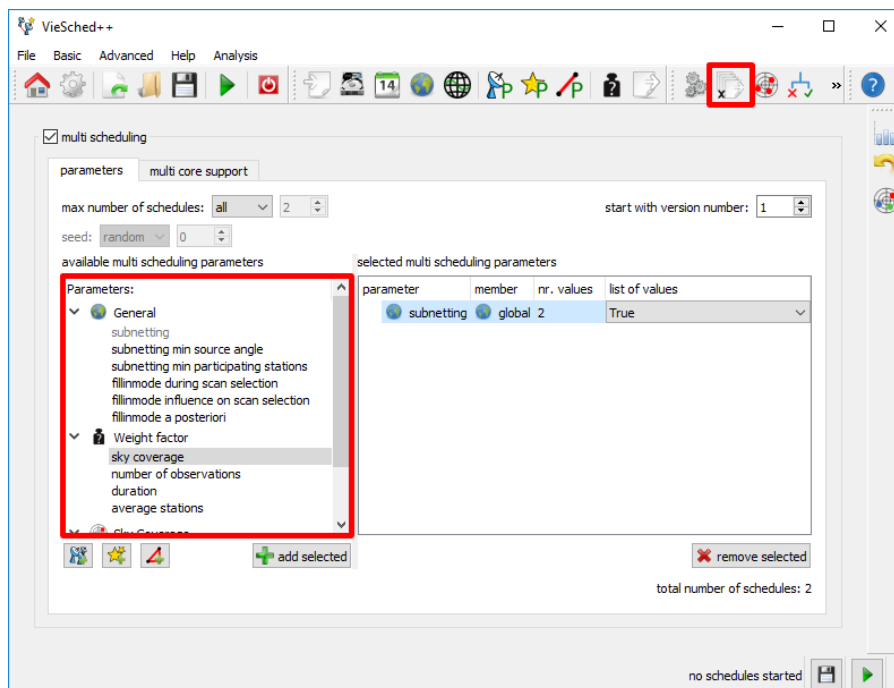
## 8 Session analyzer

Have a look at the session in more detail using the "VieSched++ session analyzer".



## 9 Have some fun

- Have a look at the parameters which are used by default
- Try the multi scheduling tool



- Change some parameters, like: subnetting, weight factors...
- Compare schedules using the statistics tool and explore your schedules using the schedule analyzer